

How to Prepare a Bottle



Wash hands and sanitize bottle before preparation.



Warm formula to at least body temperature ~98.6°F/37°C.

(If following Kendamil's preparation guidelines to heat water before adding formula, allow the mixture to cool to at least 110°F before mixing in Gelmix.)



Follow recipe for desired thickness, and sprinkle Gelmix into warm formula.



Cap and shake well 30 seconds, until completely dissolved.



Let thicken for wait time listed in recipe. Mix again before feeding.

Recipe for Kendamil Classic Powder

2.4g Gelmix = 1 stick or 2 scoops

a gram scale is the most accurate method for measurement

1 SLIGHTLY THICK (thin nectar)

- add 2.4g to 4 fl. oz.
- to scale, use .6g per 1 fl. oz
- wait 10 minutes to thicken

2 MILDLY THICK (nectar)

- add 2.4g to 3 fl. oz.
- to scale, use .8g per 1 fl. oz
- wait 10 minutes to thicken

3 MODERATELY THICK (honey)

- add 2.4g to 2 fl. oz.
- to scale, use 1.2g per 1 fl. oz
- wait 10 minutes to thicken

Level 3 should only be used under medical supervision, as it may restrict nipple flow and increase the risk of dehydration.

IDDSI Flow Test

The IDDSI Flow Test measures how fast a liquid flows using the IDDSI Funnel and helps define its thickness level.

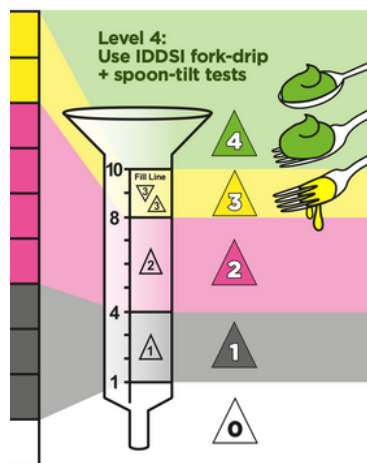
Use this tool the first few times you try a recipe to account for variations in the formula or environment, such as temperature, and ensure you achieve the desired thickness.



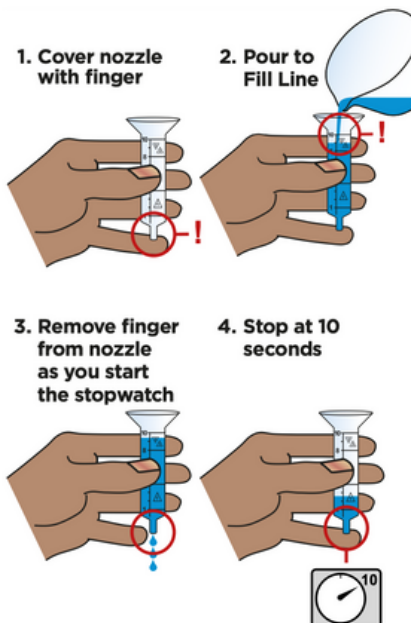
www.iddsi.org

Flow Test

IDDSI level depends on liquid remaining after 10 seconds flow.



© IDDSI 2023



© The International Dysphagia Diet Standardisation Initiative 2023 @ <https://iddsi.org/framework>. Licensed under the Creative Commons Attribution Sharealike 4.0 License <https://creativecommons.org/licenses/by-sa/4.0/legalcode>. Derivative works extending beyond language translation are NOT PERMITTED.

Tests Performed by Parapharma Tech, Designed for use with the IDDSI Framework.

For more recipes visit: gelmix.com/recipes - Email: contact@gelmix.com - Phone: 866.950.7278

Refer directly to product packaging for nutritional data and safety information.

Can I prepare Gelmix in advance?

Yes, you can prepare Gelmix with most formulas up to 24 hours ahead. Follow the preparation instructions, then store the mixture right away in a clean, sealed container in the refrigerator. Warm it gently before feeding.

For powder formulas, you also have the option to mix Gelmix with warm water only and store it in a clean, sealed container at room temperature for up to 24 hours. When it's time to feed, simply add the powder formula to the prepared water and mix well.

Are there any side effects to using Gelmix?

Some babies may have gas or loose stools when first using Gelmix. This is normal and usually goes away within two weeks as your baby adjusts to the added fiber. If symptoms don't get better or get worse, talk to your doctor.

What should I do if I'm getting clumps?

Gelmix should dissolve easily in warm milk. If you're having trouble with clumps, try these tips:

- Use the right temperature: Warm the formula to at least body temperature, about 98°F. Liquids hotter than 120°F can cause clumps, and colder than 95°F won't thicken properly.
- Mix Quickly: Sprinkle Gelmix into the liquid and mix right away. Shake for at least 30 seconds to mix well.
- Try a Frother: Some formulas clump more easily than others. Using a frother/mixer can help create a smooth mixture.

Should I change the nipple size?

Thickened feeds flow slower, so you might need a larger nipple size or one made for thickened liquids. Talk to your speech-language pathologist (SLP) or feeding therapist to find the best size and flow rate for your baby, especially if they have dysphagia.

Where can I purchase Gelmix?

Gelmix is readily available on Amazon, [gelmix.com](https://www.gelmix.com) and some local stores. Check our website for all locations. Gelmix is usually supplied by DME suppliers (not pharmacies), which specialize in medically necessary supplies.

Is Gelmix covered by insurance?

Thickeners are not always covered by insurance, but it may be possible if they are considered medically necessary. Your doctor can send a referral or letter of medical necessity to a DME supplier using HCPCS Code B4100.

- **Medicaid**: Coverage depends on the state. Many states cover thickeners through Medicaid. If your state doesn't, the WeCare program offers discounts for Medicaid recipients. Visit [gelmix.com/wecare](https://www.gelmix.com/wecare) to learn more.
- **Private Insurance**: Check with your provider about coverage or reimbursement for medically necessary items.

For more Medicaid details and to find DME suppliers, visit [gelmix.com/insurance](https://www.gelmix.com/insurance).